



SHEFFIELD SEXUAL EXPLOITATION SERVICES

Annual Report

April 2016 – March 2017

Contents

Introduction	2
National Context.....	2
Overview of Service	3
Local Governance Arrangements.....	4
Data and Analysis.....	5
Achievements and Impact	8
The Alexi Project	8
Training	8
Prevention.....	9
Protection.....	9
Pursuit.....	9
Prosecution	10
Participation	10
Partnership Working.....	11
Appendix 1 – CSE Service Structure.....	12

Introduction

Sheffield Sexual Exploitation Service (SSES) is a co-located Multi-Agency Service responsible for tackling Child Sexual Exploitation (CSE) in Sheffield. The service works with children and young people experiencing sexual exploitation who are age 18 and under, with some older young adults dependent on need.

Over the past year the service has continued to grow and work more holistically to support children and young people who are being exploited and to prevent young people from being exploited where they are presenting with CSE risk factors. Whilst we are making headway in relation to early identification of CSE, it remains everybody's responsibility to ensure that they understand the signs of child sexual abuse and to be aware of the referral pathways to safeguard these children and young people, many of whom are vulnerable and have a range of complexities.

This report highlights the work SSES has undertaken during 2016/17 along with the profile data of the service users who accessed the service during that time, in order for us to better understand CSE need and prevalence in Sheffield. The service works with a range of statutory and independent organisations, and Sheffield Futures would like to thank the range of partners we work with who make this robust and multi-agency way of working possible.

National Context

In February 2017, The Government introduced new guidance for practitioners working with victims of Child Sexual Exploitation (CSE) and published the following revised definition:

Child sexual exploitation is a form of child sexual abuse. It occurs where an individual or group takes advantage of an imbalance of power to coerce, manipulate or deceive a child or young person under the age of 18 into sexual activity (a) in exchange for something the victim needs or wants, and/or (b) for the financial advantage or increased status of the perpetrator or facilitator. The victim may have been sexually exploited even if the sexual activity appears consensual. Child sexual exploitation does not always involve physical contact; it can also occur through the use of technology. (Child Sexual Exploitation - Definition and a guide for practitioners, local leaders and decision makers working to protect children from child sexual exploitation, DfE 2017)

In 2012 The Office of the Children's Commissioner's inquiry in to child sexual exploitation in gangs and groups interim report identified over 2,400 children who were victims of sexual exploitation by groups and gangs between August 2010 and October 2011. The same report identified a further 16,500 children who were at high risk of child sexual exploitation between April 2010-March 2011. The National Crime Agency published figures in 2014 identifying 236 children were believed to have been trafficked for sexual exploitation during 2013.

Overview of Service

The Sheffield Sexual Exploitation Service is a multi-agency team of professions, based in Star House, which is in the city centre. The team comprises of Social Workers, Youth Workers, Police Officers, a Family Support Worker, CSE Manager, CSE Education Officer and NHS Nurse. This team ensures that there is a joined up approach to identification of risk through robust assessment and includes a whole range of interventions and strategies to protect vulnerable young people, support their families and ensure that those who exploit young people are prosecuted.

All concerns of CSE are referred directly through Sheffield Safeguarding Hub (formally Sheffield's Social Care Screening) and do not take direct referrals. This ensures that CSE is always assessed within a safeguarding context, and addresses wider vulnerabilities and risk. The SSES gathers information from young people, professionals and communities to pursue those involved in the exploitation of children and young people. The detectives attached to the service are then responsible for bringing offenders to the prosecution stage whilst the wider team support victims through the criminal justice process.

The service works at all levels of risk from serious child protection to early prevention work - supporting children and young people with concerning behaviours which may lead to exploitative situations. The prevention arm of the service is supported by multi agency Community Youth Teams (CYT's) which undertake low to medium risk case work and group work, once the SSES have identified the level of risk and vulnerability. High to medium cases remain in the SSES. CYTs are a specialist young people's service which supports vulnerable young people within their own communities. Both the SSES and CYT services use youth work principles of engagement and strengths based interventions to address underlying contextual factors and to empower young people to make positive choices to keep themselves safe and reach personal goals.

The Service works to address sexual exploitation on five key principals: prevention, protection, pursuit, prosecution and participation. To achieve this, the service works with partner agencies to prevent sexual exploitation by raising awareness of issues with professionals, businesses, communities and young people. The service promotes a city wide responsibility to protecting vulnerable young people from exploitation in line with the Local Safeguarding Children Board's (LSCB) priorities. The service has a training function, and supports the Sheffield Safeguarding Children Board to deliver multi agency training across the city, as well as group work with young people in schools and information events for parents/carers and professionals.

The Service hosts the Alexi Project, which is a grant funded 'Hub and Spoke' CSE best practice model. Sheffield CSE is the Hub of good practice, sharing learning with 3 spoke areas in Doncaster, Barnsley and Kirklees. This covers elements such as direct work with young people, training for professionals and the licencing trade, and young people who have experienced CSE voice and participation work.

A service structure can be found in [appendix 1](#).

It's important to note, that other organisations in the city, namely NSPCC and Gold Digger work directly with young people with low level CSE risk, and the SSES work closely with these organisations to ensure that we work as part of a whole system approach to CSE.

Local Governance Arrangements

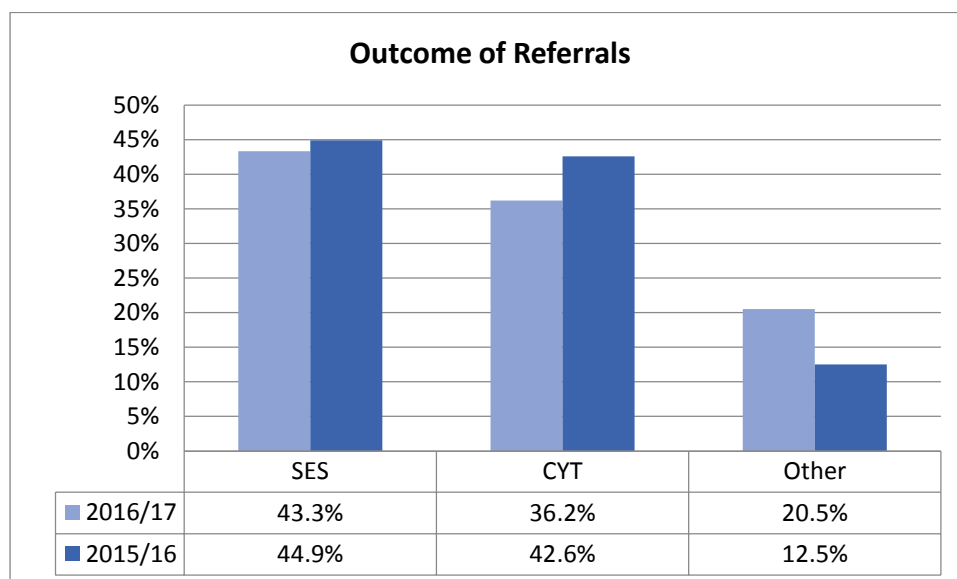
Sheffield's response to child sexual exploitation is overseen by the Sheffield Safeguarding Children's Board, for whom tackling the issue has been a priority since the late 1990s. Oversight of services' work to address sexual exploitation is the responsibility of the Child Sexual Exploitation Strategic Group – chaired by the local authority's Director of Children's Services. This group reports to Sheffield Safeguarding Children's Board's executive board. Membership of the strategic group includes representatives from the statutory sector – police, health, education and social care, as well as the voluntary sector – Sheffield Futures. The Sexual Exploitation Service provides quarterly performance updates to the executive board.

Beneath the Child Sexual Exploitation Strategic Group is the CSE Operational Group, responsible for implementing the city's aims and objectives for tackling sexual exploitation. In order to ensure that the multi-agency approach to addressing child sexual exploitation is delivered at all levels the SSES facilitates a practitioners meeting for all interested professionals. This provides a multi-agency arena to disseminate evidence based practice and share local practice and support.

Data and Analysis

A total of **141** referrals received between 1st April 2016 and 31st March 2017.

OUTCOME OF REFERRALS



Of the 141 referrals for 2016/17, 43% were allocated to the Sexual Exploitation Service case managers. 2015/16 equated to 45% so the difference is negligible but again is less than half of the total referrals into the service.

Those in the 'other' category were allocated to group work with the Sexual Exploitation Service; were already being supported by another agency or they moved out of city (where they were referred on to the local CSE service wherever possible).

All referrals are initially sent to Social Care Screening and appropriate referrals sent to SES; below are the original referring agencies into screening:

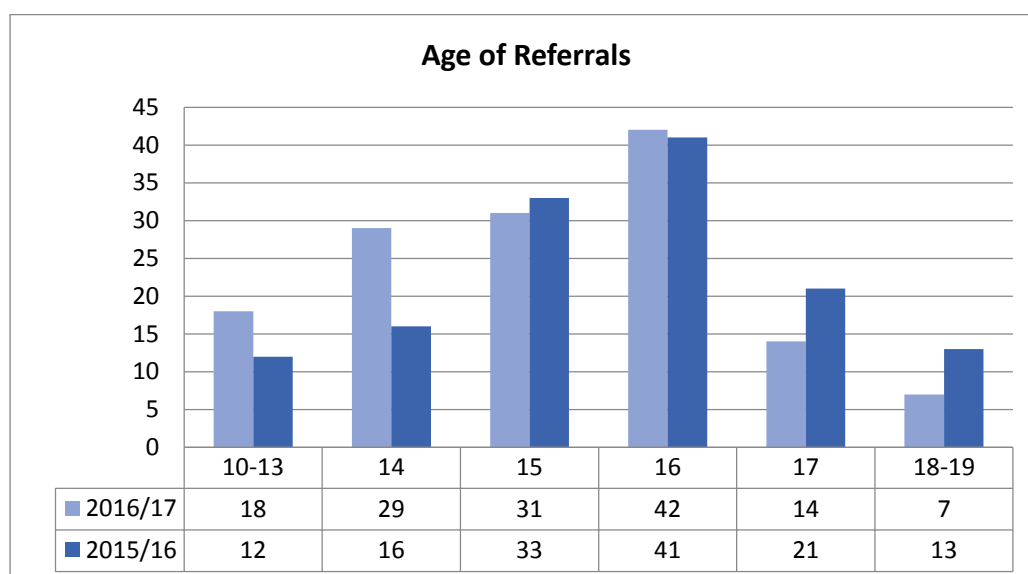
- 48% Social Care
- 20% Police
- 17% school/college
- 6% MAST/MASH

The remaining 9% are from Health, Parent/Carer, NSPCC, Empower & Protect Project and CYT

The 141 cases were risk assessed by SES as:

- 21 High – all 21 allocated to SES
- 82 Medium
- 38 Low

AGE OF REFERRALS



The peak age of referrals is age 16 with 30% of the total. The peak age in 2015/16 was exactly the same, age 16 and 30% of the total.

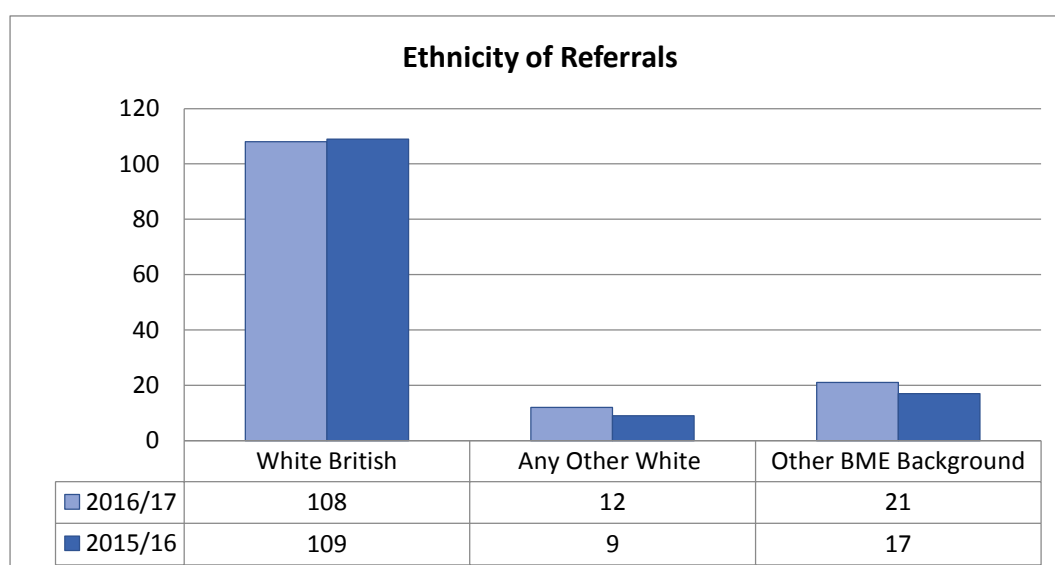
38% of high risk cases were age 16 followed by age 14 and 15 with 24% each
 67% of medium risk cases were age 14-16

The notable changes are age 14 where the referrals have increased by 8% on last year and age 18-19 where the numbers have fallen by almost half. Age 17 has also seen a fall of 5% on last year.

GENDER OF REFERRALS

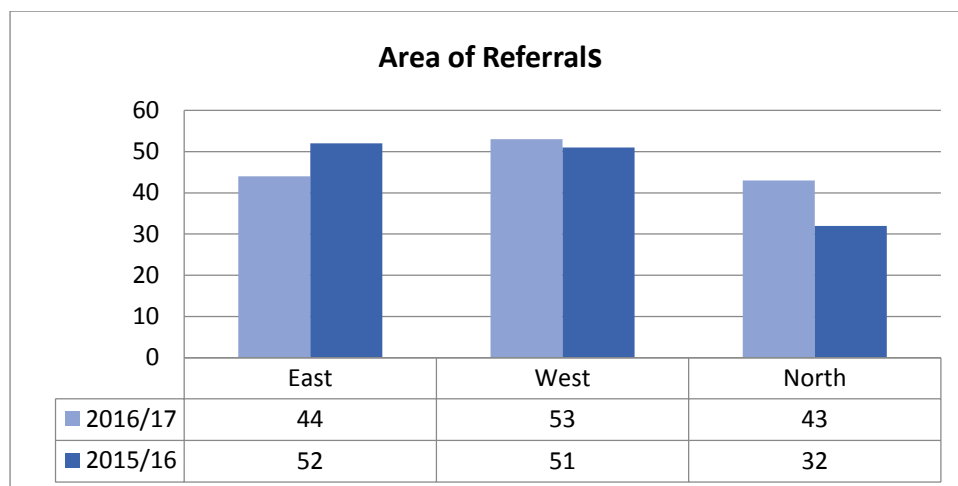
Of the 141 referrals, 98% were for females. In 2015/16 the total females was 92% so a slight increase in 2016/17.

ETHNICITY OF REFERRALS



There are no significant changes compared to 2015/16. The majority of the referrals in 2016/17 are White British with 77% of the total referral, compared to 80% last year.

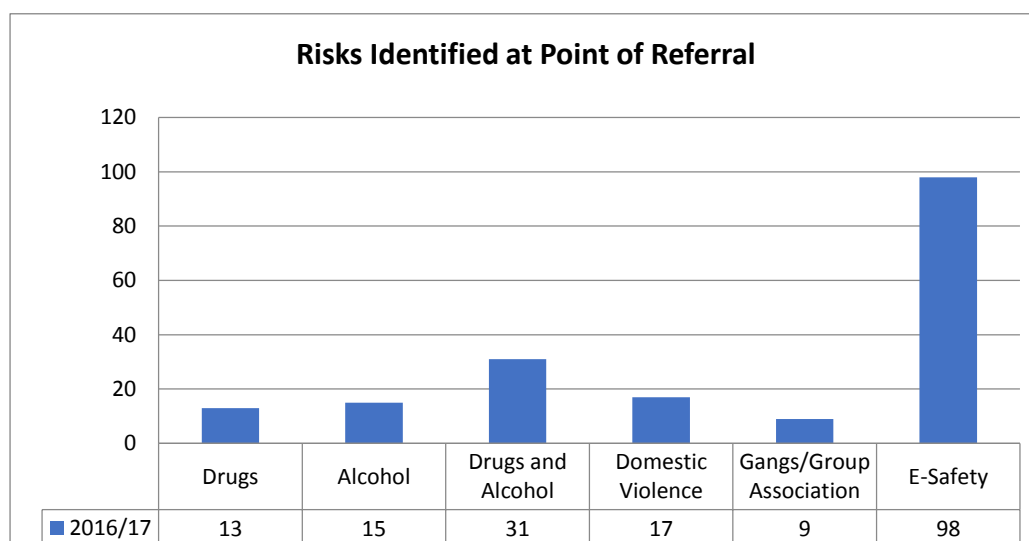
AREA OF REFERRALS



There has been a slight change in referrals in the North and East areas of the city compared to 2015/16, a 7% increase in the North and a 7% fall in the East.

LOOKED AFTER STATUS

Of the 141 referrals in 2016/17, 9% are LAC compared to 14% in 2015/16.



Of the 141 referrals multiple risks and concerns were identified from the referral form as indicated above.

Just below 70% have E-Safety concerns. 22% have used drugs and alcohol and 12% have been subject to domestic violence.

The indicators above are not indicative, they are just the concerns picked out from an initial referral. Only on completion of a full assessment will it become apparent the true risks/concerns at which point the appropriate service and support package will be put in place.

A young person can have multiple identified risks. These numbers are to be taken as benchmark figures for future reporting.

Achievements and Impact

The Alexi Project

Sheffield CSE Hub & Spoke Project is one of 15 national Hubs, based within voluntary services and funded by the CSE Funders Alliance. The Sheffield Hub is also working as part of a unique model with hubs in Derby and Cambridgeshire to shape best practice in involving young people's voices in CSE policy, service design and delivery. The national initiative is being evaluated by the University of Bedfordshire. The Sheffield Hub is managed by the SES, ensuring that practice developed in Sheffield is delivered in the 3 spoke areas of Doncaster, Barnsley and Kirklees, in relation to participation, direct 1-1 interventions and training for practitioners. The Alexi ensures that all up-to date policy and developments developed elsewhere in the country influence and shape the Sheffield service making this a valuable resource for the SSES.

Training

In 16/17, the SSES was able to train a range of professionals and young people:

Professionals Training	Sessions	Attended
Education	9	305
Health	6	87
LAC/Care Leavers/Children Services/Sheltered Housing/Residential	5	62
Multi Agency	25	456
Others/ Voluntary Sector	5	63
Total	50	973

A total of 973 professionals over 50 sessions have been trained by SSES to be aware of the risks and signs of CSE.

Education includes secondary schools and special schools (Heritage Park, Bents Green and Freeman College for example).

Health includes Sheffield Children's Hospital, Sexual Health Sheffield and Becton CAMHS.

Multi Agency includes BLAST Conference, NWG Conference and Sheffield Futures staff.

Others/Voluntary Sector include solicitors, university, South Yorkshire Passenger Transport, Young Carers and Barnardo's.

Young People Training	Sessions	Attended
Alternative Curriculum Provider	5	85
Education	27	1340
LAC/Care Leavers/Children Services/Sheltered Housing/Residential	3	15
Voluntary Sector	31	147
Total	66	1587

A total of 1587 young people have been trained to be aware of the risks of CSE by SSES.

Alternative Provider and Education includes secondary schools, college and NCS (National Citizen Service).

The Voluntary Sector includes Barnardo's, youth clubs, Safe and Sound and Together Women.

In addition to the above, a total of 127 parents/carers have attended 4 sessions across schools and MAST.

Training for Taxi drivers continues across the region with 1102 attending sessions in 2016/17.

The **Vulnerability Roadshows** took place with representatives from SSES, CYT, The Corner, IDVAs and the Intensive Family Support team giving 20 minute overviews of their service. 8 sessions in total took place where referral pathways and the subsequent client journey was described by the services involved. The audience consisted mainly of social workers and all sessions were well attended. Feedback was positive with many saying they felt a lot more confident about referring a young person through for professional help.

Prevention

The SSES service assesses all young people at all levels of risk, ensuring that young people with low level risk are offered early, preventative help to make positive choices and understand their own vulnerability towards sexual exploitation. Using a variety of youth focussed resources and interventions, the CYTs work in a 1-1 capacity with young people identified as low to medium risk, within the context of their families and where possible their peer groups and schools. Many of the young people identified as low risk are in the younger age range of the cohort, and have specific concerns around their internet and social media use. The SSES work with other key partners in the city such as the NSPCC who deliver preventative and targeted group work in schools, with groups of girls and boys. Where young people require additional 1-1 support, then referrals through social care are made to ensure that their needs are assessed holistically.

Prevention work across the city also includes a range of targeted multi agency training for professionals and direct work with parents.

Protection

The introduction of a one route pathway through social care screening for all CSE referrals has been embedded and will be further developed through the Sheffield Safeguarding Hub in April 2017. This has ensured that any referral requiring a joint visit by a social worker and police are identified and actioned immediately.

Cases which are risk assessed as being medium or high risk are allocated a support worker from the Sexual Exploitation Service. In all cases an initial meeting involving the young person, their family and professionals, is called to plan the package of support. Regular three month review meetings take place to ensure plans are adhered to or adapted to reflect changing needs.

The service continues to develop a 'contextual safeguarding' approach to protecting young people by attending various mapping and intelligence meetings across the city and assessing risk in the young person's context; identifying and understanding where the exploitative situation occurs, and then addressing the factors that foster this in partnership with other agencies.

Pursuit

The introduction of an intelligence focussed multi-agency meeting in 16/17, which takes place every month has enhanced information sharing and pursuit of perpetrators of CSE. Chaired by the police, the meeting has representatives from Housing, Residential Homes, YJS, Missing from Home Officers, Health and social care. The focus is on identifying vulnerable young people, offenders and 'hot spots' around the city, then jointly devising solutions to disrupt criminal activity and safeguard young people. Suspected named offenders are subject to a 'scoring' matrix by the police Integrated Offender Management team and dependant on this, a variety of tactics can be adopted.

Abduction Notices, a police power aimed at preventing inappropriate contact between adults and children are considered when an adult is associating inappropriately with a child or young person under the age of 16, or 18 if the individual is on a full care order. The service ensures it carefully observes local and national cases to continuously inform practice and utilise any legislative changes to achieve the aim of disruption and pursuit.

Prosecution

The Sexual Exploitation Service continues to offer intensive one-to-one support for victims involved in police investigations.

There is a range of legislation used to prosecute offenders, but of note an outcome directly related to successful submission of information, by the SSES, was a police operation in Sheffield City Centre. Police officers supported by SSCB Licensing made several arrests for drugs offences. The operation saw a fast food venue closed after CSE safeguarding concerns were identified.

The Service was involved in supporting young people as witnesses through Court proceedings in 16/17. Operation Monroe was a large investigation into non-recent CSE offences which saw 5 perpetrators tried for a variety of sexual offences in Sheffield. They were collectively sentenced to 43 years imprisonment.

Participation

Participation is encouraged on an individual level, by supporting young people to be actively involved in decision making in relation to their own care planning, and decisions that affect them, their friends and families.

A group of young people accessing the SSES became Sheffield's first CSE Participation Group and were involved in the National Working Group's (NWG) Participation Group, helping to 'youth proof' the #Saysomething campaign, aimed at increasing awareness and the reporting of CSE as well as parliamentary visits and supporting to develop national guidance. These young women have moved into a different phase of their lives, but their legacy has helped to shape national policy and local practice. The Service is currently undertaking preparation work with individual service users to develop a new group which will continue the ground-breaking work of the original participation group.

Through Alexi Project, the service has developed a local training resource 'Live Learn Survive' (LLS) which is a toolkit to support services to develop robust participatory work in CSE services based on practice experience and national evidence. It is a cross regional resource between Safe and Sound, Link to Change and Sheffield Futures.

LLS is in its first official draft and has been peer reviewed by the University of Bedfordshire, NWG and by Sheffield's Lead Solution Brief Therapist. The resource has been piloted with 7 CSE youth groups and 1 non-CSE group that was used as a control. LLS has also been tested with practitioners in England and Wales. In March 17, the Service undertook a soft launch of LLS at the NWG 2017 annual conference to about 60 professionals which has generated national interest in the resource. Formal launch is planned for the end of 2017 after it has been Asdan accredited.

Partnership Working

CSE cannot be tackled by one agency operating alone. Effective responses must be built on a holistic understanding of the problem which comes from a shared commitment to partnership working. The Sexual Exploitation Service has embedded a fully integrated multi-agency working ethic at all levels.

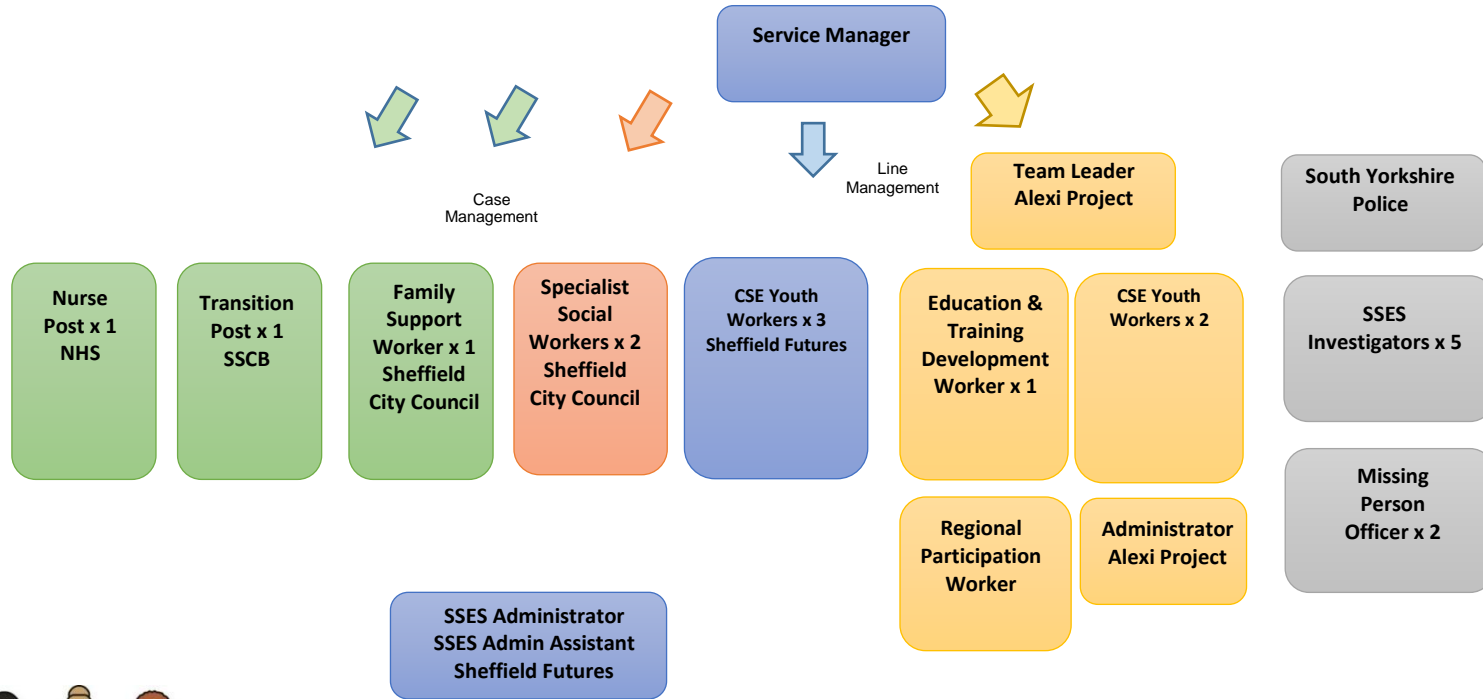
The SSES continually work with a range of statutory and third sector agencies, schools and higher education. The Transitions Worker post, which completed at the end of the financial year, identified a range of new organisations and the need for the development of pathways with adult services to ensure that young people reaching 18 and beyond were supported through transitions into adult services across health, education, social care etc. This work will be taken forward in 17/18 supported by both the children's and adults Safeguarding Board to ensure that pathways are developed and funding is sought to employ a worker specifically to meet the needs of this group of young women.

A Specialist CSE nurse joined the core team in September 2016, which is supervised by the School Nursing Service. The initial phase explored the diverse health services within Sheffield and develop a range of contacts across the field. Since January 2017 the Specialist CSE Nurse has worked closely with young people to assess unmet health need. Health records are reviewed and updated on System One to ensure other health practitioners, including GP services, Health Visitors and School Nurses can access the risk assessment and plan of care / support. In low and medium cases, the outcomes are shared with School Nurses. The Nurse has seen 25 young people in 16/17 where support has been offered and accepted.

The Specialist Nurse role has been promoted so that wider health services can contact and discuss any cases / concerns linked to CSE and they are given guidance about making referrals via the Safeguarding Hub. Awareness raising sessions for Practice Nursing Teams for the Clinical Commissioning Group (CCG) have been given and we have accommodated student health practitioners on attachment to give them a greater understanding of CSE.

Appendix 1 – CSE Service Structure

Sheffield Sexual Exploitation Service



Page 99

